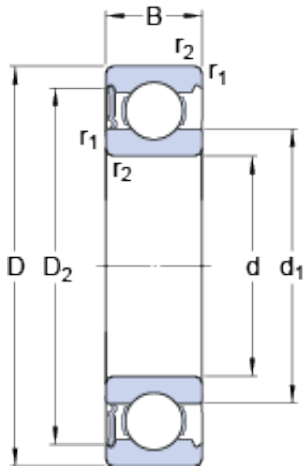




NTN DRIVESHAFT ANDERSON, INC.



50 mm x 90 mm x 20 mm SKF 6210-RS1 deep groove ball bearings

Bearing No. 6210-RS1

6210-RS1 Bearing 2D drawings and 3D CAD models

| | |
|---|--------------------------|
| Size | 90x50x20 mm |
| Bore Diameter | 90 mm |
| Outer Diameter | 50 mm |
| Width | 20 mm |
| d | 50 mm |
| D | 90 mm |
| B | 20 mm |
| d ₁ | 62.51 mm |
| D ₂ | 81.61 mm |
| r _{1,2} - min. | 1.1 mm |
| d _a - min. | 57 mm |
| d _a - max. | 62.4 mm |
| D _a - max. | 83 mm |
| r _a - max. | 1 mm |
| Basic dynamic load rating - C | 37.1 kN |
| Basic static load rating - C ₀ | 23.2 kN |
| Fatigue load limit - P _u | 0.98 kN |
| Limiting speed | 4800 r/min |
| Calculation factor - k _r | 0.025 |
| Calculation factor - f ₀ | 14.4 |
| Category | Single Row Ball Bearings |
| Inventory | 0.0 |
| Manufacturer Name | SKF |
| Minimum Buy Quantity | N/A |



NTN DRIVESHAFT ANDERSON, INC.

| | |
|---------------------------------|--|
| Weight / Kilogram | 0.47 |
| EAN | 7316577302649 |
| Product Group | B00308 |
| Enclosure | 1 Seal |
| Precision Class | ABEC 1 ISO P0 |
| Maximum Capacity / Filling Slot | No |
| Rolling Element | Ball Bearing |
| Snap Ring | No |
| Internal Special Features | No |
| Cage Material | Steel |
| Enclosure Type | Contact Seal |
| Internal Clearance | C0-Medium |
| Inch - Metric | Metric |
| Long Description | 50MM Bore; 90MM Outside Diameter; 20MM Outer Race Diameter; 1 Seal; Ball Bearing; ABEC 1 ISO P0; No Filling Slot; No Snap Ring; No Internal Special Features |
| Category | Single Row Ball Bearing |
| UNSPSC | 31171504 |
| Harmonized Tariff Code | 8482.10.50.68 |
| Noun | Bearing |
| Keyword String | Ball |
| Manufacturer URL | http://www.skf.com |
| Manufacturer Item Number | 6210-RS1 |
| Weight / LBS | 1.04 |
| Outer Race Width | 0.787 Inch 20 Millimeter |
| Outside Diameter | 3.543 Inch 90 Millimeter |
| Bore | 1.969 Inch 50 Millimeter |
| d ₁ | 62.51 mm |
| D ₂ | 81.61 mm |
| | |



NTN DRIVESHAFT ANDERSON, INC.

| | |
|--------------------------------|---------|
| $r_{1,2}$ min. | 1.1 mm |
| d_a min. | 57 mm |
| d_a max. | 62.4 mm |
| D_a max. | 83 mm |
| r_a max. | 1 mm |
| Basic dynamic load rating C | 37.1 kN |
| Basic static load rating C_0 | 23.2 kN |
| Fatigue load limit P_u | 0.98 kN |
| Calculation factor k_r | 0.025 |
| Calculation factor f_0 | 14.4 |
| Mass bearing | 0.46 kg |